

# THE LOOPY LIBRARY

## PUZZLES

## INVENTIONS

### FIENDISH MYSTERY BOXES

Each of these two boxes consists of a complete alphabet plus six additional letters. You must find the six letters then arrange them to spell the names of what is in each box. Are you up to the challenge?



THEY ARE FIENDISH!

Ink has been produced in various ways going back thousands of years. It was developed in both Egypt and China around 2,500BC.

Many different types of ingredients have been used, such as soot, tar, walnut oil and gum.

OUR LATEST INVENTION! A PEN THAT WILL NEVER RUN OUT OF INK. YOU JUST ATTACH IT TO THE TANK! BUT ... THERE IS JUST ONE PROBLEM!

WE HAVEN'T QUITE FIGURED OUT HOW TO MAKE A POCKET SIZED VERSION!

WHAT'S THAT?

### MAXI INK TANK

SPEEDFILL V.6 90,000 LITRES

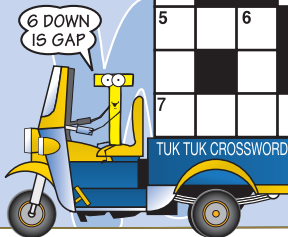
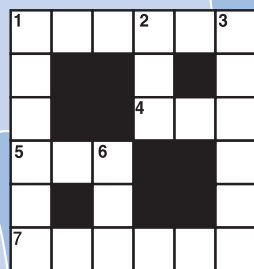
#### COLOUR SELECTION

- BLACK ☐
- BLUE ☐
- RED ☐
- GREEN ☐
- RAINBOW EFFECT ☐

## MINI CROSSWORD

CLUES ACROSS  
1) Floor covering (6)  
4) Bake it in an oven (3)  
5) Farm animal (3)  
7) Play it again (6)

CLUES DOWN  
1) Type of metal (6)  
2) Young dog (3)  
3) 75 - 55 = ? (6)  
6) The space in between (3)



DON'T GIVE AWAY THE ANSWERS!

### SUM IT UP

Which two of the four numbers in the yellow boxes should be put into Box A and Box B to make the answer 31?

15 8 7 13

$$26 + \boxed{A} - \boxed{B} = 31$$

A B

## COOKERY

## ART

### WORDS IN A WORD

Can you make two more words from each of these three words?

#### POTS

1) ---  
2) ---

#### PANS

1) ---  
2) ---

#### MUGS

1) ---  
2) ---

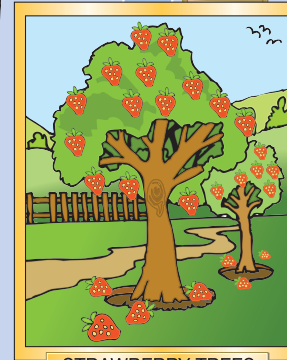
HEAD CHEF DO NOT DISTURB

### HOT MEALS FOR WINTER DAYS

IVAN OVEN



STRAWBERRY TREES



STRAWBERRY TREES

Can you spot the eight differences between these two pictures?

ARE YOU SURE?

STRAWBERRIES DO NOT GROW ON TREES!

## JOKES

WHAT DID THE FISH SAY WHEN IT SWAM INTO A WALL?

DAM!

IF YOU KNOW ANY GOOD JOKES, SEND THEM TO US!